



Whittier Union High School District:  
**East Stadium at California High School**

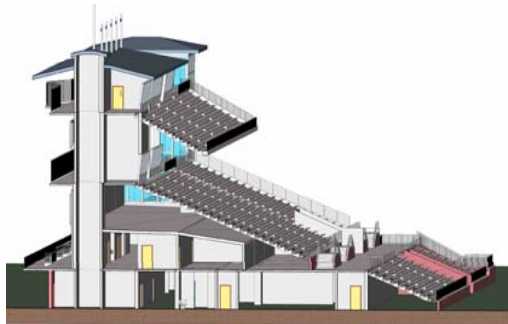
**Client:**  
 Whittier Union High School District

**Location:**  
 Whittier, CA

**Size:**  
 76,000 SF Stadium Structure

**Cost:**  
 Estimated \$2 Million for site work,  
 \$15 Million for building.

**Completed:**  
 Estimated August 2013



- Higher Education
- K-12 Schools
- Athletic Facilities**
- Child Development
- Technical
- Office/Commercial
- Religious
- Housing

This is a large scale replacement of the California High School existing football stadium and baseball and softball fields, a new 5,000 seat, steel and concrete grandstand field house building for the home team accommodating locker rooms, training rooms, concession stands, and classrooms on two stories and a 2,000 seat, prefabricated bleacher section for visitors as well as media rooms, coaches rooms, and a press box.

The project is currently under review by DSA. The new stadium and ball park facilities will serve students from across the District.